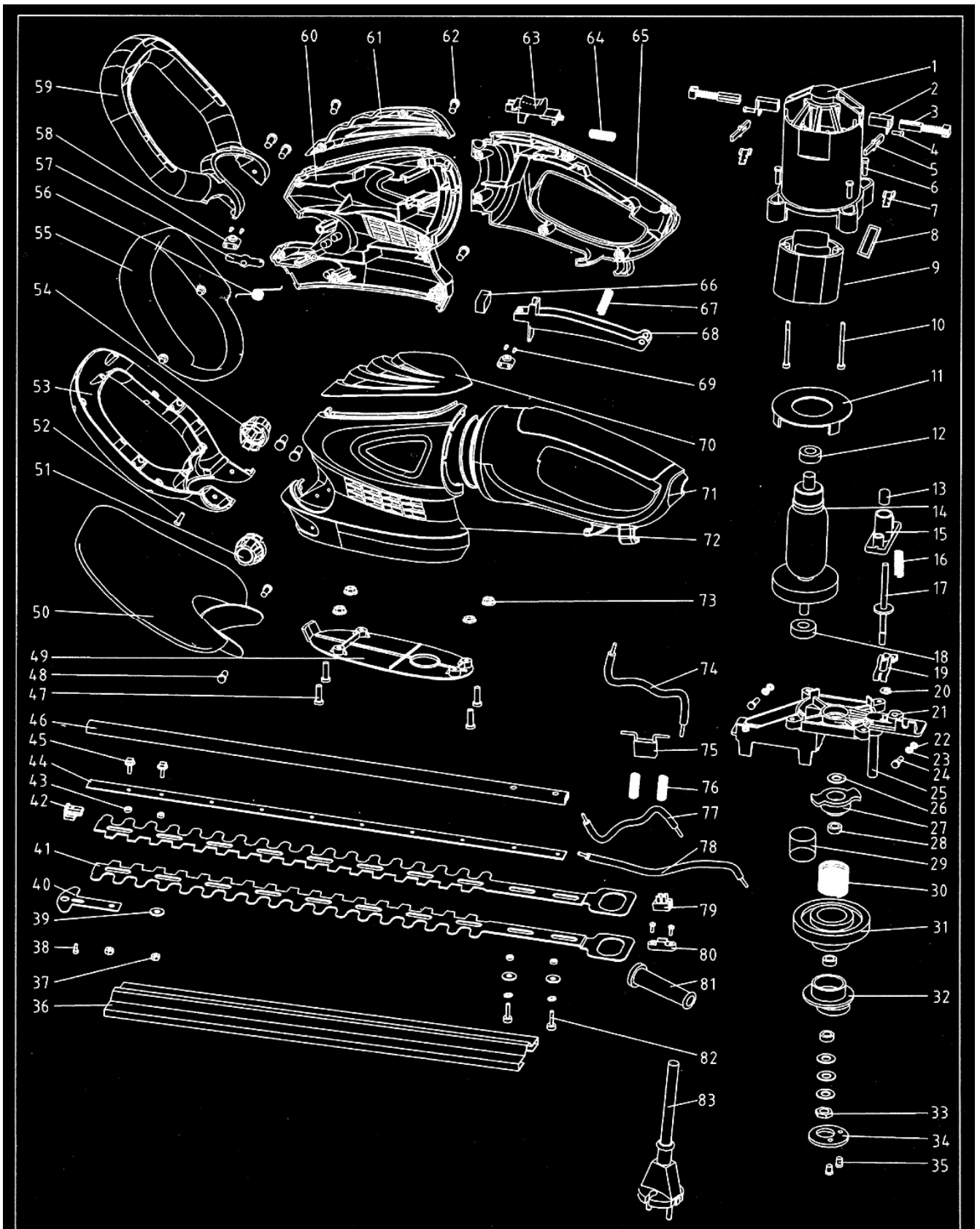


# HEDGE TRIMMER 650W



**650 W**

No.	Parts name	No.	Parts name
1	Motor cover	43	Liner ring
2	Carbon brush holder	44	Liner bar
3	Carbon brush	45	Square head screw M5
4	Screw ST3X8	46	Aluminium press bar
5	Brush insert slice	47	Screw M5X12
6	Screw M4X16	48	Screw ST4X16
7	Insert spring	49	Base board
8	Inductance	50	Safety guard
9	Stator	51	Left vice handle support button
10	Screw ST4X48	52	Screw ST3X12
11	Wind against ring	53	Vice handle down support
12	Bearing 607	54	Right vice handle support button
13	Brake shank cap	55	Vice handle press button
14	Rotor	56	Move shank spring
15	Fixed frame	57	Move shank
16	Brake Spring	58	Soft shaft fixed seat
17	Brake shank	59	Vice handle upper support
18	Bearing 608	60	Right machine house
19	Two-ear support	61	Right machine house cover
20	Open month block spring	62	Screw ST4X20
21	Central support	63	Push button
22	Plane washer	64	Spring for push button
23	Tension spring	65	Right handle
24	Screw ST5X20	66	Switch
25	Central Shaft	67	Main handle press button spring
26	Driven gear washer slice	68	Main handle press button
27	Brake block	69	Screw ST3X25
28	Needle bearing 0808	70	Left machine house cover
29	Rubber block	71	Left handle
30	Big torsion spring	72	Left machine house
31	Gear	73	Flange nut
32	Eccentric block	74	Inner wire
33	Nut M6	75	Capacitor
34	Eccentric block cover	76	Two-ear support spring
35	Screw M5X8	77	Short soft shaft
36	Blade sheath	78	Long soft shaft
37	Self-lock nut M5	79	Wire connect pole
38	Screw ST4X12	80	Wire press board
39	Washer for blade	81	Cable sheath
40	Blade protection head	82	Nut M5X28
41	Blade	83	Cable and plug
42	Block for aluminium bar		